

Duplo

The Duplo is a powerful motor driven siren which produces a very high sound output despite its physically compact construction.

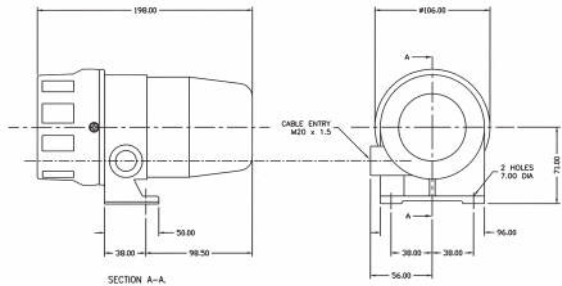
With its weatherproof design, the Duplo can be used both indoors and outdoors for general safety warning.

Features

- High output siren sound (127dB)
- Rugged construction for use in all environments
- Weatherproof to IP65A
- Mounting bracket for ease of installation



Applications - General safety warning; conveyors; process control alarm; vehicle alarm



Specifications

Part No.	Colours	Audibility (tone) at 1m (typical)	Tones (Up to)	Voltage (50/60Hz)	Current (tone dependent)
SLB-0002	Grey/Black	Up to 127 dB (A)	1	230V AC	2.0A

IP Rating: IP65A **Rated Operating Duration:** 15mins On/120mins Off **Frequency:** 1600Hz **Operating Temp:** -30°C to +40°C
Construction: Cast Aluminium Body, ABS Rotor, Stator and Cover **Cable Entries:** 1 **Weight:** 2kg